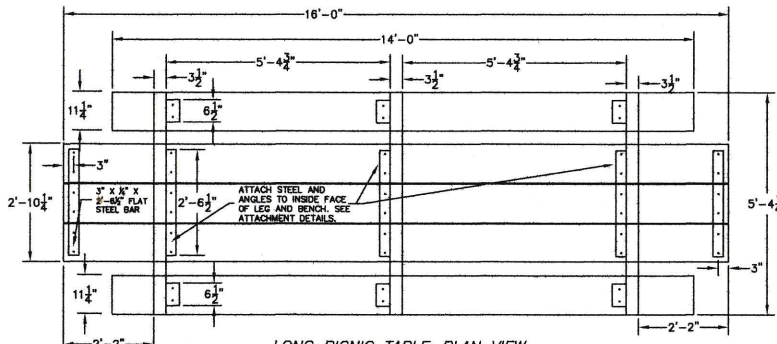
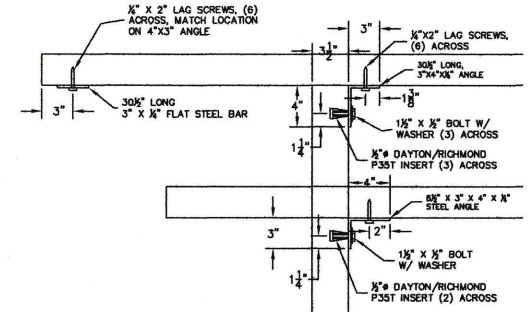


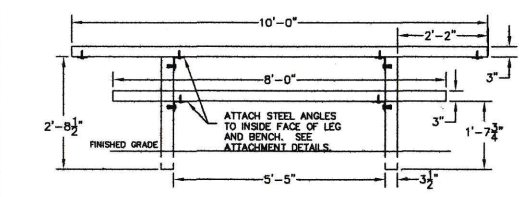
① PICNIC TABLE--PLAN VIEW



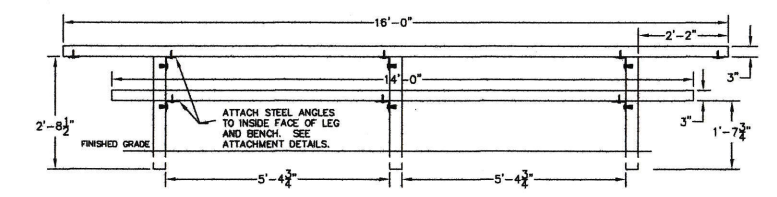
④ LONG PICNIC TABLE--PLAN VIEW



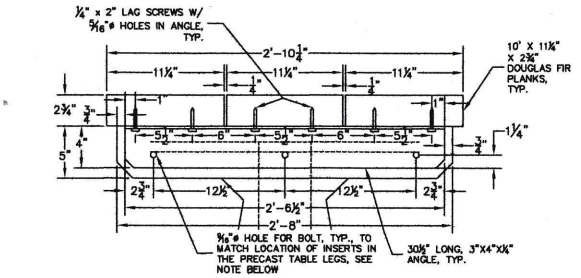
⑥ ATTACHMENT DETAILS



② PICNIC TABLE--SIDE VIEW



⑤ LONG PICNIC TABLE--SIDE VIEW



③ PICNIC TABLE--END VIEW

- NOTES:
1. TABLE LEGS TO BE INSTALLED 5 1/4" BELOW GRADE SO TOP OF INTERMEDIATE SUPPORT IS FLUSH WITH THE FINISHED GRADE.
  2. ALL WOOD SURFACES TO BE STAINED WITH 2 COATS OF OLYMPIC SEMI-TRANSPARENT STAIN 713 OXFORD BROWN OR APPROVED EQUAL.
  3. FURNISH AND INSTALL 8 SINGLE TABLES AT SOUTH CLEAR CREEK CG.
  4. FURNISH AND INSTALL 9 SINGLE TABLES AT CLEAR LAKE CG.
  5. CLEAR LAKE CG SITES # 6 & #8 HAVE 16 FOOT LONG PICNIC TABLES WITH 3 LEGS PER TABLE.

